



AmeriCRAFT
MANUFACTURING CO. INC.
INDUSTRIAL VENTILATING & EXHAUST FANS

Man & Product Coolers

MAN & PRODUCT COOLER – DIRECT DRIVE



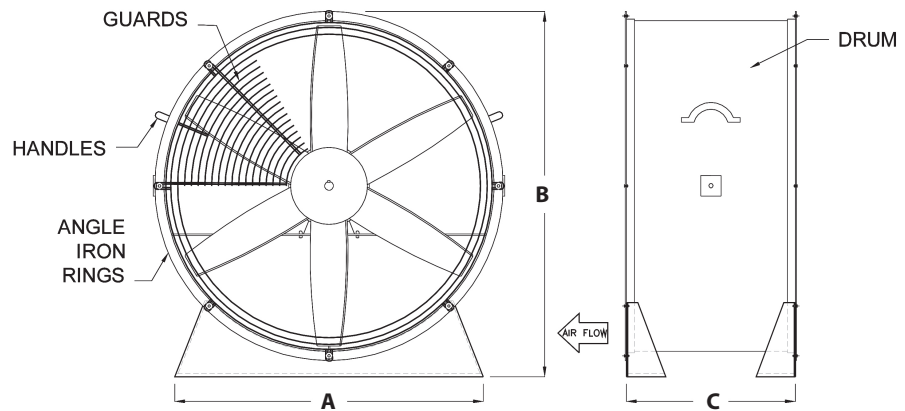
LOW STAND

APPLICATION

Provides portable cooling for personnel or processes. Heavy duty construction provides many years of service in demanding industrial locations such as steel mills, foundries, factories and warehouses.

FEATURES AND BENEFITS

- Front & rear OSHA style concentric circle wire guards on all sizes except 60" which is ½" wire mesh.
- Rugged spark-resistant cast aluminum propellers are standard.
- Industrial grade TEFC motors are standard.
- Explosion proof motors available for hazardous locations.
- Available in low, medium or high stands to meet varied centerline height requirements.
- Medium and high stand fans rotate 180 degrees on their center mount axis.
- One-way swivel yoke swivels 180° on a horizontal axis and two-way swivel yoke swivels 180° on a horizontal axis and 360° on a vertical axis.
- All models have cord wired to motor and extended through fan housing except explosion proof fans.



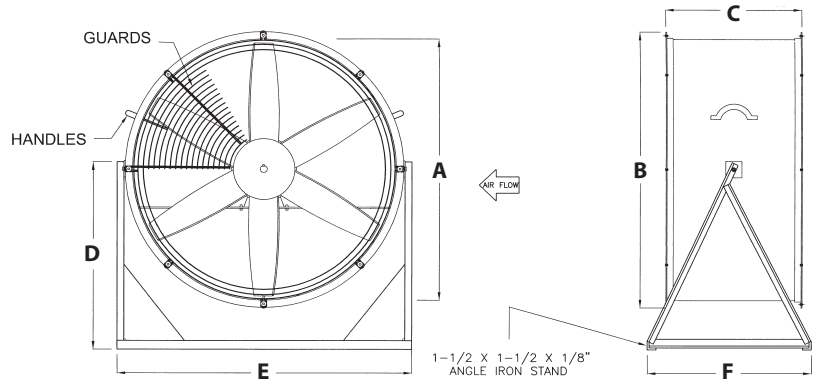
DIMENSIONS (subject to change without notice)

SIZE	A	B	C	HP
18"	18"	21 1/2"	20"	1/4-1
24"	24"	27 1/2"	20"	1/4-3
30"	30"	33 1/2"	20"	1/3-3
36"	36"	39 1/2"	24"	1-5
42"	42"	45 1/2"	24"	2-5
48"	48"	52"	28"	5-10
60"	55 1/2"	64"	36"	7 1/2-15

Man & Product Coolers



MEDIUM STAND

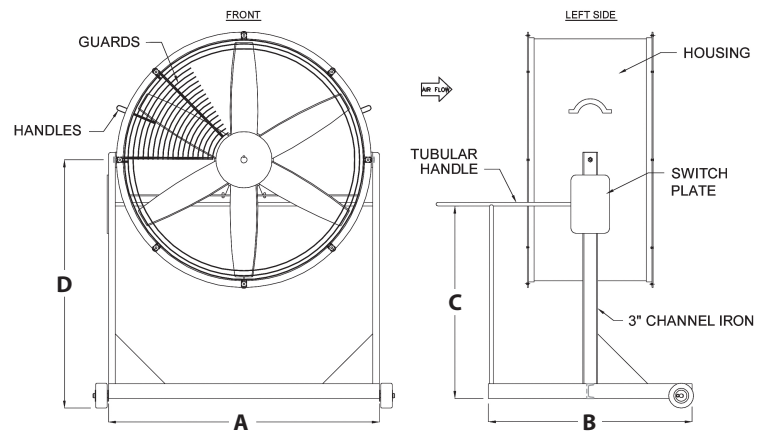


DIMENSIONS (subject to change without notice)

SIZE	A	B	C	D	E	F	HP
18"	18"	20"	20"	28"	23 1/2"	32"	1/4-1
24"	24"	26"	20"	28"	29 1/2"	32"	1/4-3
30"	30"	32"	20"	28"	35 1/2"	32"	1/3-3
36"	36"	38"	24"	28"	41 1/2"	32"	1-5
42"	42"	44"	24"	28"	47 1/2"	32"	2-5
48"	48"	51"	28"	36"	53 1/2"	32"	5-10
60"	60"	63"	36"	56"	67"	56"	7 1/2-15



HIGH STAND



DIMENSIONS (subject to change without notice)

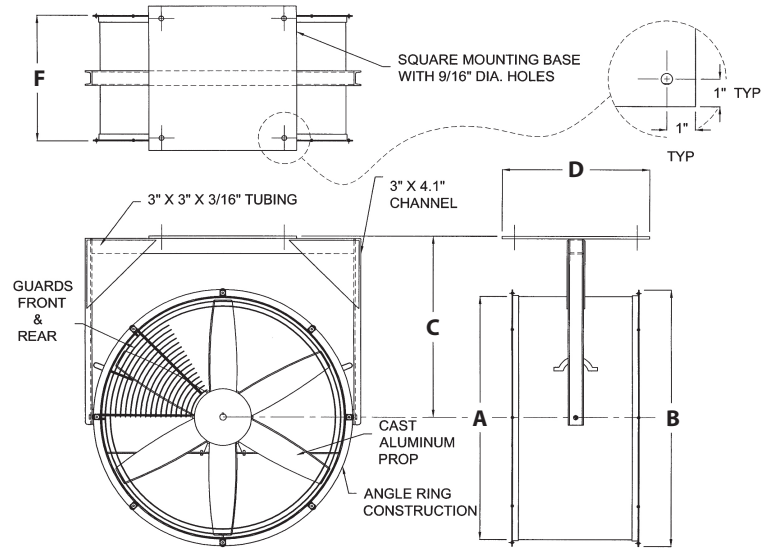
SIZE	A	B	C	D	HP
18"	23"	30"	25"	42"	1/4-1
24"	29"	30"	25"	42"	1/4-3
30"	35"	30"	25"	42"	1/3-3
36"	41"	30"	25"	42"	1-5
42"	47"	30"	25 1/2"	42"	2-5
48"	53"	30"	25 1/2"	42"	5-10
60"	65"	50"	25 1/2"	56"	7 1/2-15

Man & Product Coolers

MAN & PRODUCT COOLER – DIRECT DRIVE



ONE-WAY
SWIVEL YOKE



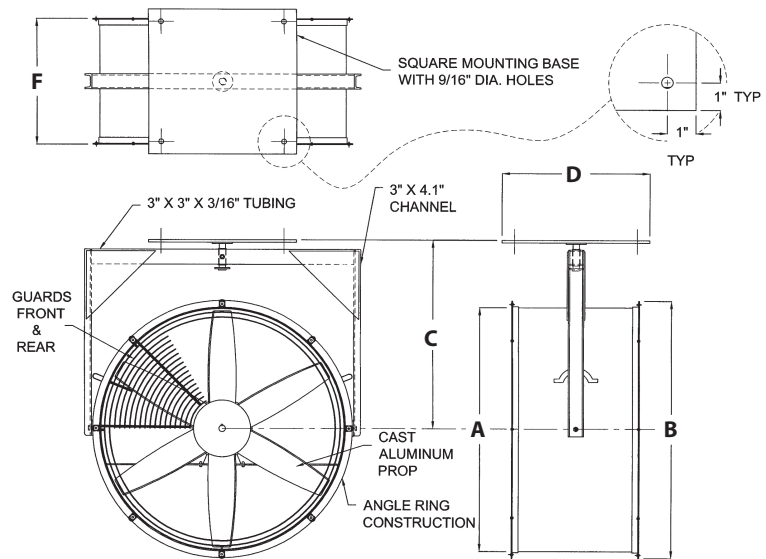
DIMENSIONS (subject to change without notice)

SIZE	A	B	C	D	F	HP
18"	18"	20"	20"	15"	20"	1/4-1
24"	24"	26"	21 1/2"	15"	20"	1/4-3
30"	30"	32"	25 1/2"	15"	20"	1/3-3
36"	36"	38"	29 1/2"	18"	24"	1-5

NOTE: Consult factory for larger fan sizes.



TWO-WAY
SWIVEL YOKE



DIMENSIONS (subject to change without notice)

SIZE	A	B	C	D	F	HP
18"	18"	20"	20"	15"	20"	1/4-1
24"	24"	26"	21 1/2"	15"	20"	1/4-3
30"	30"	32"	25 1/2"	15"	20"	1/3-3
36"	36"	38"	29 1/2"	18"	24"	1-5

NOTE: Consult factory for larger fan sizes.

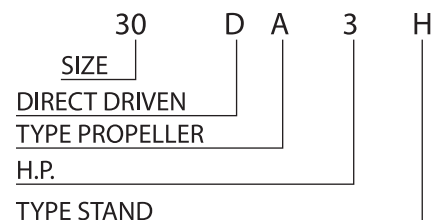
MAN & PRODUCT COOLER – CAST ALUMINUM – DIRECT DRIVE PERFORMANCE DATA

Blade Dia.	MODEL NUMBERS						Prop	HP	RPM	C.F.M. Air Del.	dBA
	Low Stand	Medium Stand	High Stand	1-Way Swivel	2-Way Swivel						
18"	18DA1/4-L	18DA1/4-M	18DA1/4-H	18DA1/4-1Y	18DA1/4-2Y	CA105	1/4	1725	3050	74	
	18DA1/3-L	18DA1/3-M	18DA1/3-H	18DA1/3-1Y	18DA1/3-2Y	CA232	1/3	1725	3450	76	
	18DA1-L	18DA1-M	18DA1-H	18DA1-1Y	18DA1-2Y	CA107	1	1725	4600	77	
24"	24DA1/4-L	24DA1/4-M	24DA1/4-H	24DA1/4-1Y	24DA1/4-2Y	CA130	1/4	1725	5200	80	
	24DAL1/3-L	24DAL1/3-M	24DAL1/3-H	24DAL1/3-1Y	24DAL1/3-2Y	CA109	1/3	1140	5300	74	
	24DA1/2-L	24DA1/2-M	24DA1/2-H	24DA1/2-1Y	24DA1/2-2Y	CA108	1/2	1725	6000	80	
	24DAL1/2-L	24DAL1/2-M	24DAL1/2-H	24DAL1/2-1Y	24DAL1/2-2Y	CA236	1/2	1140	6000	75	
	24DAL3/4-L	24DAL3/4-M	24DAL3/4-H	24DAL3/4-1Y	24DAL3/4-2Y	CA191	3/4	1140	6900	74	
	24DA1-L	24DA1-M	24DA1-H	24DA1-1Y	24DA1-2Y	CA109	1	1725	7400	82	
	24DA1 1/2-L	24DA1 1/2-M	24DA1 1/2-H	24DA1 1/2-1Y	24DA1 1/2-2Y	CA236	1 1/2	1725	8200	84	
	24DA3-L	24DA3-M	24DA3-H	24DA3-1Y	24DA3-2Y	CA191	3	1725	10500	87	
	30"	30DAL1/3-L	30DAL1/3-M	30DAL1/3-H	30DAL1/3-1Y	30DAL1/3-2Y	CA167	1/3	1140	6900	80
	30DA1/2-L	30DA1/2-M	30DA1/2-H	30DA1/2-1Y	30DA1/2-2Y	CA112	1/2	1725	8900	86	
	30DAL3/4-L	30DAL3/4-M	30DAL3/4-H	30DAL3/4-1Y	30DAL3/4-2Y	CA113	3/4	1140	10400	80	
	30DAL1-L	30DAL1-M	30DAL1-H	30DAL1-1Y	30DAL1-2Y	CA207	1	1140	11200	80	
	30DA1 1/2-L	30DA1 1/2-M	30DA1 1/2-H	30DA1 1/2-1Y	30DA1 1/2-2Y	CA132	1 1/2	1725	12000	92	
	30DAL2-L	30DAL2-M	30DAL2-H	30DAL2-1Y	30DAL2-2Y	CA115	2	1140	14000	84	
	30DA3-L	30DA3-M	30DA3-H	30DA3-1Y	30DA3-2Y	CA113	3	1725	16000	94	
36"	36DAL1-L	36DAL1-M	36DAL1-H	36DAL1-1Y	36DAL1-2Y	CA134	1	1140	13000	82	
	36DA1 1/2-L	36DA1 1/2-M	36DA1 1/2-H	36DA1 1/2-1Y	36DA1 1/2-2Y	CA133	1 1/2	1725	14850	88	
	36DAL2-L	36DAL2-M	36DAL2-H	36DAL2-1Y	36DAL2-2Y	CA117	2	1140	17500	82	
	36DA3-L	36DA3-M	36DA3-H	36DA3-1Y	36DA3-2Y	CA134	3	1725	18500	90	
	36DAL3-L	36DAL3-M	36DAL3-H	36DAL3-1Y	36DAL3-2Y	CA221	3	1140	20500	84	
	36DA5-L	36DA5-M	36DA5-H	36DA5-1Y	36DA5-2Y	CA117	5	1725	23000	94	
42"	42DAL2-L	42DAL2-M	42DAL2-H	---	---	CA165	2	1140	19500	86	
	42DA5-L	42DA5-M	42DA5-H	---	---	CA165	5	1725	27000	98	
	42DAL5-L	42DAL5-M	42DAL5-H	---	---	CA119	5	1140	27000	86	
48"	48DAL5-L	48DAL5-M	48DAL5-H	---	---	CA185	5	1140	32000	92	
	48DALL5-L	48DALL5-M	48DALL5-H	---	---	CA138	5	870	33000	86	
	48DAL7 1/2-L	48DAL7 1/2-M	48DAL7 1/2-H	---	---	CA139	7 1/2	1140	37000	105	
	48DAL10-L	48DAL10-M	48DAL10-H	---	---	CA138	10	1140	41000	105	
	48DALL10-L	48DALL10-M	48DALL10-H	---	---	CA195	10	870	39000	87	
60"	60DALL-7 1/2-L	60DALL-7 1/2-M	60DALL-7 1/2-H	---	---	CA228	7 1/2	870	47000	91	
	60DALL-10-L	60DALL-10-M	60DALL-10-H	---	---	CA143	10	870	57200	92	
	60DALL-15-L	60DALL-15-M	60DALL-15-H	---	---	CA227	15	870	60750	93	

NOTE: Consult factory for optional steel propeller performance data.

OPTIONAL ACCESSORIES

- Caster sets which include two fixed and two swivel locking casters available on medium and low stands.
- Manual starting switches with built-in overload protection, mounted & wired for fans with TEFC motors only.
- Coatings available for outdoor service or harsh environments.
- Belt drive configuration.
- Fabricated steel propellers.



L in Model Number = 1140 RPM Motors
LL in Model Number = 870 RPM Motors

Propellers

Americraft cast aluminum propellers are uniquely designed to prevent overloading across the static range. All cast propellers are precision balanced in our factory. Many different blade and hub styles are used to best meet all customer needs.

Those propellers with an asterisk in the performance chart are for use on belt driven fans. They are shown in the ratings at speeds other than motor speeds or the hub sections are not designed for direct driven fans.

When ordering cast aluminum propellers, please specify the bore size and the exact diameter of the propeller you desire. The propellers shown are usually trimmed to fit inside the fan drum or ring and therefore are slightly less in diameter than the sizes listed. Full sizes can be obtained by specifying the exact diameter required.

Note: Consult Americraft for applications with static pressures above 1.25" S.P. W.G.

Blade Dia.	Prop	HP	RPM	# Blades	Type	Free Air	CAPACITY C.F.M.										
							1/8" SP	1/4" SP	3/8" SP	1/2" SP	3/4" SP	1" SP	1-1/4" SP	1-1/2" SP	1-3/4" SP	2" SP	
12"	CA101	1/4	1725	4		1180	930	520	---	---	---	---	---	---	---	---	---
	CA101	1/4	2625	4	*	1444	1307	1033	638	380	---	---	---	---	---	---	---
	CA101	1/3	2875	4	*	1586	1436	1135	700	415	---	---	---	---	---	---	---
	CA101	1/2	3450	4		1875	1650	1400	1320	1250	1100	660	---	---	---	---	---
	CA102	3/4	3450	6		2044	1960	1920	1820	1650	1500	1100	---	---	---	---	---
15"	CA103	1/4	2000	6	*	2600	2100	1700	---	---	---	---	---	---	---	---	---
	CA103	1/3	2200	6	*	2950	2500	2100	1760	1000	---	---	---	---	---	---	---
	CA264	1/2	1890	6	*	3350	3000	2650	2200	1500	---	---	---	---	---	---	---
	CA264	3/4	2200	6	*	3900	3700	3400	3100	2700	1150	---	---	---	---	---	---
	CA264	1	2400	6	*	4250	4000	3700	3375	2950	1250	---	---	---	---	---	---
16"	CA160	1/4	1140	6		2100	1700	500	---	---	---	---	---	---	---	---	---
	CA159	1/4	1725	6		2800	2400	2000	1400	700	---	---	---	---	---	---	---
	CA203	1 1/2	3450	4		5000	4900	4800	4700	4600	4400	---	---	---	---	---	---
18"	CA235	1/4	1600	6	*	3050	2500	2000	1200	---	---	---	---	---	---	---	---
	CA235	1/3	1725	6	*	3375	3000	2600	2000	1400	---	---	---	---	---	---	---
	CA232	1/3	1725	6		3375	3000	2600	2000	1400	---	---	---	---	---	---	---
	CA105	1/4	1725	4		3450	3050	2500	1200	---	---	---	---	---	---	---	---
	CA235	1/2	1890	6	*	3850	3500	3100	2500	2000	---	---	---	---	---	---	---
	CA107	3/4	1600	6	*	4100	3985	3440	3050	2500	---	---	---	---	---	---	---
	CA161	1/2	1725	6		4150	3850	3150	2800	1700	---	---	---	---	---	---	---
	CA107	1	1725	6		4600	4375	4080	3600	3000	2100	1550	---	---	---	---	---
	CA107	1 1/2	1990	6	*	5350	5060	4830	4550	3950	3000	2500	---	---	---	---	---
	CA202	2	3450	4		5800	5700	5600	5400	5200	5000	4000	---	---	---	---	---
CA177	3	3450	6		6600	6350	6000	5750	5500	5200	4600	4100	3500	---	---	---	
20"	CA184	1/4	1140	4		2800	2560	2380	1400	---	---	---	---	---	---	---	---
	CA149	1/4	1725	4		3720	3160	2510	1650	---	---	---	---	---	---	1650	---
	CA150	1/2	1140	6		4750	4400	3900	3000	600	---	---	---	---	---	---	---
	CA148	1/2	1725	6		4800	4450	3950	3340	2500	---	---	---	---	---	---	---
	CA180	1	1725	6		6900	6600	6200	5900	5500	3700	850	---	---	---	---	---
24"	CA173	1/4	1140	6		4600	4200	3400	1600	---	---	---	---	---	---	---	---
	CA109	1/3	1140	6		4975	4690	4250	3920	2850	---	---	---	---	---	---	---
	CA130	1/4	1725	2		5200	4200	2820	1050	---	---	---	---	---	---	---	---
	CA144	1/2	1298	6	*	5643	5320	4826	4440	3500	---	---	---	---	---	---	---
	CA108	1/2	1725	4		6510	5880	5200	4150	3100	1800	---	---	---	---	---	---
	CA236	1/2	1140	6		6840	6100	5170	1900	---	---	---	---	---	---	---	---
	CA114	3/4	1140	6		6900	6450	6265	5600	3300	---	---	---	---	---	---	---
	CA173	3/4	1725	6		6900	6510	5900	5440	4650	2750	---	---	---	---	---	---
	CA144	3/4	1600	6	*	6906	6510	5900	5440	4650	2750	---	---	---	---	---	---
	CA144	1	1725	6	*	7425	7000	6350	5850	5000	3300	1775	---	---	---	---	---
	CA109	1	1725	6		7425	7000	6350	5850	5000	3300	1775	---	---	---	---	---
	CA196	1	1357	6	*	7450	7100	6650	5950	5200	3000	---	---	---	---	---	---
	CA144	1 1/2	1890	6	*	8167	7700	7000	6435	5500	3650	1950	---	---	---	---	---
	CA236	1 1/2	1725	6		8200	7700	7250	6500	5500	3500	1125	---	---	---	---	---
	CA196	1 1/2	1540	6	*	8200	7900	7650	7280	6850	5500	---	---	---	---	---	---
	CA162	2	1725	6		9525	9196	8810	8360	7980	6960	3000	---	---	---	---	---
	CA196	2	1680	6	*	9600	9250	8940	8655	8250	7300	4800	---	---	---	---	---
	CA191	2	1600	6	*	9760	9114	8830	8460	8090	7000	4400	---	---	---	---	---
	CA191	3	1725	6	*	10500	9800	9500	9100	8700	7800	5000	3600	2000	---	---	---
	CA114	3	1725	6		10500	9800	9500	9100	8700	7800	5000	3600	2000	---	---	---
CA191	5	1920	6	*	11400	10600	10350	9900	9475	8500	7200	6000	5000	---	---	---	

* Designates belt driven models.

Propellers

Blade Dia.	Prop	HP	RPM	# Blades	Type	Free Air	CAPACITY C.F.M.										
							1/8" SP	1/4" SP	3/8" SP	1/2" SP	3/4" SP	1" SP	1-1/4" SP	1-1/2" SP	1-3/4" SP	2" SP	
27"	CA121	1/2	1725	4		7550	6820	6000	5100	4000	2000	---	---	---	---	---	
	CA111	3/4	1250	6	*	8330	7814	7550	7070	6500	4650	---	---	---	---	---	
	CA110	3/4	1600	4	*	8900	8370	7800	7230	6550	4100	---	---	---	---	---	
	CA111	1	1400	6	*	9400	8675	8480	7950	7300	5200	---	---	---	---	---	
	CA110	1	1725	4		9600	9000	8400	7775	7050	4800	---	---	---	---	---	
	CA111	1 1/2	1600	6	*	10700	10250	9700	9080	8375	6000	2500	---	---	---	---	---
	CA111	2	1725	6		11500	11200	10700	10000	9300	8000	5900	3600	---	---	---	---
	CA152	2	1350	6	*	11500	11200	10700	10000	9300	8000	5200	---	---	---	---	---
CA152	3	1600	6	*	13480	12900	12222	11440	10552	8200	6200	4000	---	---	---	---	
30"	CA167	1/3	1140	4		6950	5550	3900	1500	---	---	---	---	---	---	---	
	CA132	1/2	1140	6		7500	6150	4400	2200	---	---	---	---	---	---	---	
	CA167	1/2	1300	4	*	8900	7925	6660	4270	2300	---	---	---	---	---	---	
	CA112	1/2	1725	4		8980	7650	6300	5400	4350	2300	---	---	---	---	---	
	CA113	1	1298	6	*	9897	8970	7980	6050	4120	---	---	---	---	---	---	
	CA113	3/4	1140	6		10440	9750	8750	7640	6000	---	---	---	---	---	---	
	CA115	1	870	6		10640	10450	9800	9000	7900	---	---	---	---	---	---	
	CA167	1	1725	4		10900	10150	9400	9000	8300	3600	---	---	---	---	---	
	CA115	1 1/2	1035	6	*	11100	10600	9700	8600	7500	3500	---	---	---	---	---	
	CA113	1 1/2	1350	6	*	11299	10460	9625	8300	6640	3490	---	---	---	---	---	
	CA207	1	1140	6		11300	10530	9450	8250	6480	3200	---	---	---	---	---	
	CA132	1 1/2	1725	6		12000	11250	10450	9600	8700	6700	---	---	---	---	---	
	CA250	2	1725	6		12000	11250	10450	9600	8700	6000	4100	---	---	---	---	
	CA115	2	1176	6	*	12100	11660	11000	10121	9322	6700	---	---	---	---	---	
	CA113	2	1575	6	*	12237	11480	10720	9850	8610	5260	2450	---	---	---	---	
	CA126	1 1/2	1725	4		12800	11835	10890	9900	8700	6210	2600	---	---	---	---	---
	CA127	1 1/2	1140	4		13350	12500	11450	10200	8000	---	---	---	---	---	---	
	CA115	3	1350	6	*	13480	12982	12498	12042	11465	10380	9470	7500	---	---	---	---
	CA115	2	1140	6		14000	13750	12900	11850	10450	---	---	---	---	---	---	
	CA113	3	1725	6		16000	15350	14700	13850	12900	10200	8000	6000	---	---	---	---
CA115	5	1650	6	*	16440	15832	15242	14686	13982	12659	11550	9200	---	---	---	---	
CA115	7 1/2	1725	6		22000	21500	21100	20600	20000	18400	14200	12008	---	---	---	---	
34"	CA147	1	1140	4		11698	11142	9882	8460	7020	---	---	---	---	---	---	
	CA116	1 1/2	1725	4		13350	12100	10000	9100	7300	---	---	---	---	---	---	
	CA128	1 1/2	1170	6	*	13695	12400	11100	8365	6000	1015	---	---	---	---	---	
	CA190	2	1027	6	*	14657	13652	12590	11500	10000	8000	---	---	---	---	---	
	CA188	2	1725	4		14850	13600	12100	10450	8800	4000	---	---	---	---	---	
	CA163	2	1140	4		15950	15100	13800	12500	11400	---	---	---	---	---	---	
	CA147	3	1725	4		17460	16630	14750	14190	13060	10900	8000	---	---	---	---	---
	CA190	3	1175	6	*	17580	16750	15896	14600	14095	12000	9500	---	---	---	---	---
	CA123	3	1140	3		19300	18290	17230	16000	14800	11614	4000	---	---	---	---	---
	CA190	5	1416	6	*	20500	19800	19000	18325	17500	16000	14200	12250	---	---	---	---
CA128	5	1725	6		21000	19850	18900	18200	17500	14850	9300	---	---	---	---	---	
36"	CA134	1	1140	4		13600	12000	11100	9000	7500	2800	---	---	---	---	---	
	CA133	1 1/2	1725	4		14350	13100	11600	10090	8301	---	---	---	---	---	---	
	CA135	2	950	6	*	16598	15726	15082	14190	13330	8000	---	---	---	---	---	
	CA166	2	1725	4		16800	15500	14200	12900	10000	8200	4000	---	---	---	---	---
	CA198	3	930	6	*	17500	16800	15900	14740	14100	12200	---	---	---	---	---	---
	CA163	2	870	4		17600	16500	15200	13620	11400	---	---	---	---	---	---	---
	CA117	2	1140	6		17620	16500	15200	13620	12300	8500	---	---	---	---	---	---
	CA134	3	1725	4		18500	17700	15700	15100	13900	11500	8550	---	---	---	---	---
	CA221	3	1100	6	*	19300	18286	17538	16500	15500	10655	6000	---	---	---	---	---
	CA221	3	1140	6		20500	19500	18500	17100	15850	11600	6500	---	---	---	---	---
	CA198	5	1100	6	*	20600	19950	19200	18500	17800	16020	14300	---	---	---	---	---
	CA198	5	1140	6		21200	20500	19500	18484	17325	14111	9500	7300	---	---	---	---
	CA198	7 1/2	1250	6	*	22500	21900	21200	20750	20050	19008	17000	15200	---	---	---	---
	CA135	5	1293	6	*	22580	21390	20000	19300	18135	15151	12000	---	---	---	---	---
	CA117	5	1725	6		23000	22150	21100	20200	19000	18100	16400	14500	6000	---	---	---
CA198	7 1/2	1250	6	*	23800	23100	22375	21480	20050	19008	17000	15200	8800	---	---	---	
CA135	7 1/2	1440	6	*	25500	24800	24100	23300	22400	20400	17150	---	---	---	---	---	
CA198	10	1500	6	*	27500	26928	26261	25591	24776	23039	21020	18300	13950	---	---	---	

* Designates belt driven models.

Limited Warranty:

Americraft Manufacturing Company, Inc. ("Americraft") warrants the products and parts it manufactures ("Americraft Products and Parts") against defects in material and workmanship under normal use and conditions for the lesser of eighteen (18) months from the date of shipment or twelve (12) months from the date of installation (the "Warranty Period"). This warranty does not apply to repairs or replacement necessitated by any cause beyond the control of Americraft including, but not limited to any malfunction, defects or failures which, in the opinion of Americraft, are caused by or resulting from: faulty installation, unauthorized service or parts, Buyer's faulty or negligent assembly of components, the negligence of Buyer or its employees or agents, any alteration or modification of Americraft Products or Parts, over-loading, incorrect electrical connections, use under abnormal operating conditions, misapplication of Americraft Products or Parts, improper maintenance, operation contrary to furnished instructions, shipping or transit accidents, modification or repair by Buyer, abuse, misuse, neglect, accident, fire, flood, or other acts of God, incorrect line voltage, or normal wear and tear. Expenses incurred by Buyer in repairing or replacing any defective Americraft Products or Parts will not be paid by Americraft unless authorized in advanced in writing signed by an authorized officer of Americraft.

In the event a defect in material or workmanship relating to Americraft Products or Parts is found during the warranty period, buyer shall immediately notify Americraft and request a written return authorization for the allegedly defective material. Return of such material shall be at the buyers' sole cost and expense (all shipping and transportation expenses to be paid by the buyer). Americraft assumes no responsibility for any material returned to its plant without written authorization of an officer of Americraft.

The Warranty contained herein is in lieu of all other warranties, express or implied, including, but not limited to, the implied warranties of merchantability and fitness for a particular purpose. Buyer agrees that Americraft liability and Buyer's sole and exclusive remedy pursuant to any claim of any kind, including but not limited to a claim in contract, tort, negligence or strict liability shall be, at Americraft's option, the repair, replacement of, or award of a credit from Americraft to Buyer in the amount of the original purchase price for any Americraft Product or Part which is determined by Americraft to be defective. Under no circumstances shall Americraft or any of its affiliates have any liability whatsoever for any compensatory, punitive, special, indirect, incidental or consequential damages, including, without limitation, lost profits or revenues, loss of use, lost production or claims of third parties against Buyer, even if Americraft has been advised of the possibility of such damages.

Concerning products or parts furnished by, but not manufactured by Americraft, such as motors, Americraft expressly limits its liability to any warranties extended by the manufacturer of such product or part, which Americraft will pass through to Buyer.

Return Policy:

All requests for returns of Americraft products are handled on an individual basis. All Americraft products are manufactured "made to order". Therefore, Americraft's Customer Service Manager must review each request for material return and determine if it is appropriate to issue a Return Merchandise Authorization (RMA).

To issue a RMA, it will be necessary for Customer Service Manager to know the model and serial number of the item to be returned and the purchase order number of the order placed. When issuing the RMA, the Customer Service Manager will estimate the amount of credit that may be expected. The estimate is subject to adjustment, after receipt and inspection of the returned merchandise.

Returned merchandise should be properly packaged to prevent damage in transit. The RMA number should be clearly marked on the container, and the packing slip should reference the RMA number. All returned merchandise should be returned "freight prepaid". Any merchandise returned without a RMA, or returned "freight collect", is refused at our dock with instructions to return to the shipper. If items returned are covered and returned under warranty, incoming freight charges will be reimbursed when justified.

DISTRIBUTED BY

www.americraftmfg.com

7937 School Road • Cincinnati, OH 45249 • 1.800.848.2938