



**AmeriCRAFT**  
**MANUFACTURING CO. INC.**  
**INDUSTRIAL VENTILATING & EXHAUST FANS**

# Roof Exhausters

## MODEL BRV – INDUSTRIAL ROOF EXHAUSTER – BELT DRIVE

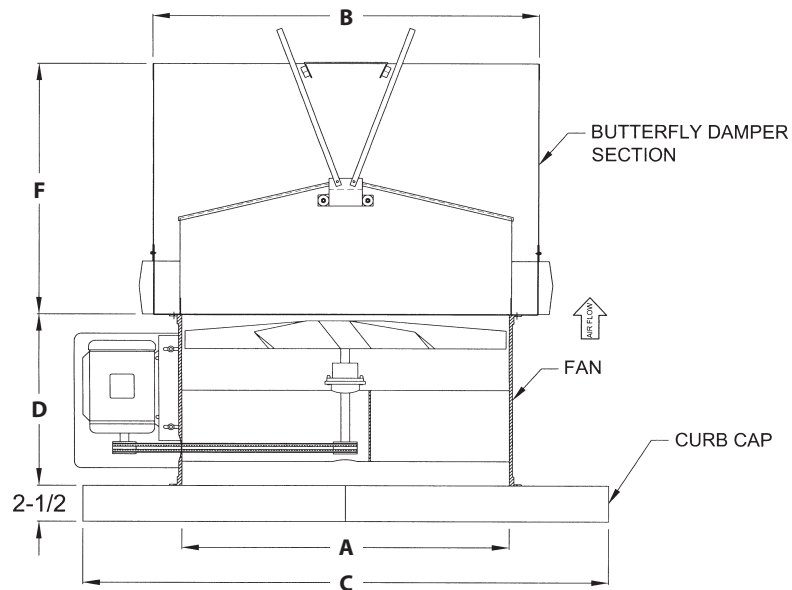


### APPLICATION

Designed for smoke, heat and fume removal in situations requiring the motor and drive components to be located outside the airstream.

### FEATURES AND BENEFITS

- Utilizes Model B tube axial duct fan with cast aluminum spark-resistant propeller standard.
- Heavy gauge curb cap continuously welded to prevent water penetration.
- Butterfly damper section, mill galvanized construction, with damper blades that open when fan is energized and close weathertight when unit is off. Dampers rotate in nylon bearings on a stainless steel axle.
- Butterfly damper section removable as a complete unit for access to propeller.
- Combination weather cover/belt guard.
- Motor and drive components located outside the airstream.
- Fan suitable for use in dry environments up to 180°F.



### DIMENSIONS (subject to change without notice)

MODEL	A	B	C	D	F	HP
BRV-18	18"	24"	33" sq.	12"	20"	1/3-1 1/2
BRV-24	24"	30"	39" sq.	12"	24"	3/4-1
BRV-24	24"	30"	39" sq.	16"	24"	1 1/2-3
BRV-30	30"	36"	45" sq.	16"	26"	1-5

MODEL	A	B	C	D	F	HP
BRV-34	34"	40"	49" sq.	16"	29"	2-5
BRV-36	36"	42"	51" sq.	18"	30 1/2"	3-7 1/2
BRV-42	42"	48"	57" sq.	18"	33"	2-5

## MODEL BRV – INDUSTRIAL ROOF EXHAUSTER – BELT DRIVE PERFORMANCE DATA

Blade Dia.	Model	Prop	HP	RPM	Free Air	CAPACITY C.F.M.							
						1/8" SP	1/4" SP	3/8" SP	1/2" SP	3/4" SP	1" SP	1-1/4" SP	1-1/2" SP
18"	BRV-18-1/3	CA235	1/3	1725	3375	3000	2600	2000	1400	---	---	---	---
	BRV-18-1/2	CA235	1/2	1890	3850	3500	3100	2500	2000	---	---	---	---
	BRV-18-3/4	CA107	3/4	1600	4100	3985	3440	3050	2500	---	---	---	---
	BRV-18-1	CA107	1	1725	4600	4375	4080	3600	3000	2100	1550	---	---
	BRV-18-1-1/2	CA107	1-1/2	1990	5350	5060	4830	4550	3950	3000	2500	---	---
24"	BRV-24-3/4	CA144	3/4	1600	6906	6510	5900	5440	4650	2750	---	---	---
	BRV-24-1	CA144	1	1725	7425	7000	6350	5850	5000	3300	1775	---	---
	BPRRV-24-1-1/2	CA196	1-1/2	1540	8200	7900	7650	7280	6850	5500	---	---	---
	BRV-24-2	CA191	2	1600	9760	9114	8830	8460	8090	7000	4400	---	---
	BRV-24-3	CA191	3	1725	10500	9800	9500	9100	8700	7800	5000	3600	---
30"	BRV-30-1	CA113	1	1298	9897	8970	7980	6050	4120	---	---	---	---
	BPRRV-30-1-1/2	CA115	1-1/2	1035	11100	10600	9700	8600	7500	3500	---	---	---
	BPRRV-30-2	CA115	2	1176	12100	11660	11000	10121	9322	6700	---	---	---
	BRV-30-3	CA115	3	1350	13480	12982	12498	12042	11465	10380	9470	7500	---
	BRV-30-5	CA115	5	1650	16440	15832	15242	14686	13982	12659	11550	9200	---
34"	BRV-34-2	CA190	2	1027	14657	13652	12590	11500	10000	8000	---	---	---
	BRV-34-3	CA190	3	1175	17580	16750	15896	14600	14095	12000	9500	---	---
	BRV-34-5	CA190	5	1416	20500	19800	19000	18325	17500	16000	14200	12250	---
36"	BPRRV-36-3	CA198	3	930	17500	16800	15900	14740	14100	12200	---	---	---
	BPRRV-36-5	CA198	5	1100	20600	19950	19200	18500	17800	16020	14300	---	---
	BPRRV-36-7-1/2	CA198	7-1/2	1250	22500	21900	21200	20750	20050	19008	17000	15200	---
42"	BPRRV-42-2	CA119	2	820	20700	18900	17002	14700	11400	4000	---	---	---
	BPRRV-42-3	CA119	3	890	23700	22100	20200	18960	16970	9950	3600	---	---
	BPRRV-42-5	CA199	5	850	26900	25600	24403	23450	22250	18400	13900	---	---

### OPTIONAL ACCESSORIES

- Weatherproof non-fused disconnect switches
- Insulated roof curbs for flat or pitched roofs

# Roof Exhausters

## MODEL BRVCS – INDUSTRIAL ROOF EXHAUSTER – BELT DRIVE

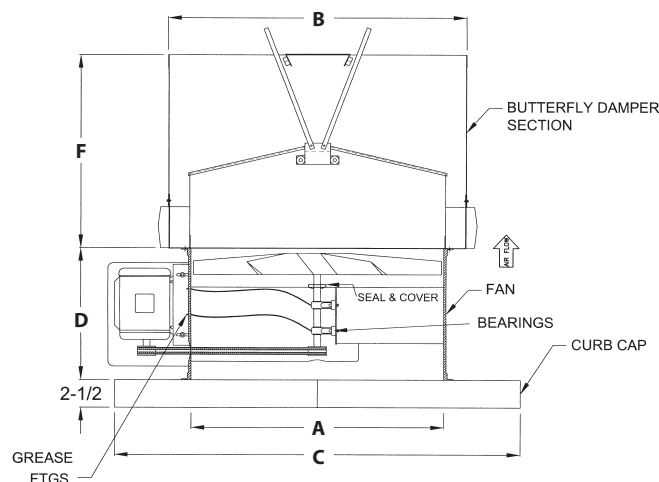


### APPLICATION

Designed for use in high moisture or contaminated airstreams requiring the motor and drive components to be located outside the airstream. Can be adapted to facilitate ductwork connection to fan inlet.

### FEATURES AND BENEFITS

- Utilizes Model BCS tube axial duct fan with cast aluminum spark-resistant propeller standard.
- Heavy gauge curb cap continuously welded to prevent water penetration.
- Butterfly damper section, mill galvanized construction, with damper blades that open when fan is energized and close watertight when unit is off. Dampers rotate in nylon bearings on a stainless steel axle.
- Butterfly damper section removable as a complete unit for access to propeller.
- Combination weather cover/belt guard.
- Motor and drive components located outside the airstream.
- Suitable for maximum temperature up to 225°F.
- High temperature package available for a maximum 375°F which includes fabricated steel propeller above 275 °F airstreams.
- Available in 304 or 316 stainless steel construction.



### DIMENSIONS (subject to change without notice)

MODEL	A	B	C	D	F	HP
BRV-CS-18	18"	24"	33" sq.	18"	20"	1/3-1 1/2
BRV-CS-24	24"	30"	39" sq.	18"	24"	3/4-3
BRV-CS-30	30"	36"	45" sq.	18"	26"	1-5
BRV-CS-34	34"	40"	49" sq.	18"	29"	2-5

MODEL	A	B	C	D	F	HP
BRV-CS-36	36"	42"	51" sq.	18"	30 1/2"	3-7 1/2
BRV-CS-42	42"	48"	57" sq.	22"	33"	2-10
BRV-CS-48	48"	54"	63" sq.	24"	33 1/2"	5-10
BRV-CS-60	60"	66"	75" sq.	30"	40"	5-15

## MODEL BRVCS – INDUSTRIAL ROOF EXHAUSTER – BELT DRIVE PERFORMANCE DATA

Blade Dia.	Model	Prop	HP	RPM	Curb Cap (Sq.)	Free Air	CAPACITY C.F.M.							
							1/8" SP	1/4" SP	3/8" SP	1/2" SP	3/4" SP	1" SP	1-1/4" SP	1-1/2" SP
18	BRV-18-1/3-CS	CA235	1/3	1725	33"	3375	3000	2600	2000	1400	---	---	---	---
	BRV-18-1/2-CS	CA235	1/2	1890		3850	3500	3100	2500	2000	---	---	---	---
	BRV-18-3/4-CS	CA107	3/4	1600		4100	3985	3440	3050	2500	---	---	---	---
	BRV-18-1-CS	CA107	1	1725		4600	4375	4080	3600	3000	2100	1550	---	---
	BRV-18-1-1/2-CS	CA107	1-1/2	1990		5350	5060	4830	4550	3950	3000	2500	---	---
24	BRV-24-3/4-CS	CA144	3/4	1600	39"	6906	6510	5900	5440	4650	2750	---	---	---
	BRV-24-1-CS	CA144	1	1725		7425	7000	6350	5850	5000	3300	1775	---	---
	BPRRV-24-1-1/2-CS	CA196	1-1/2	1540		8200	7900	7650	7280	6850	5500	---	---	---
	BRV-24-2-CS	CA191	2	1600		9760	9114	8830	8460	8090	7000	4400	---	---
	BRV-24-3-CS	CA191	3	1725		10500	9800	9500	9100	8700	7800	5000	3600	---
30	BRV-30-1-CS	CA113	1	1298	45"	9897	8970	7980	6050	4120	---	---	---	---
	BPRRV-30-1-1/2-CS	CA115	1-1/2	1035		11100	10600	9700	8600	7500	3500	---	---	---
	BPRRV-30-2-CS	CA115	2	1176		12100	11660	11000	10121	9322	6700	---	---	---
	BRV-30-3-CS	CA115	3	1350		13480	12982	12498	12042	11465	10380	9470	7500	---
	BRV-30-5-CS	CA115	5	1650		16440	15832	15242	14686	13982	12659	11550	9200	---
34	BRV-34-2-CS	CA190	2	1027	49"	14657	13652	12590	11500	10000	8000	---	---	---
	BRV-34-3-CS	CA190	3	1175		17580	16750	15896	14600	14095	12000	9500	---	---
	BRV-34-5-CS	CA190	5	1416		20500	19800	19000	18325	17500	16000	14200	12250	---
36	BPRRV-36-3-CS	CA198	3	930	51"	17500	16800	15900	14740	14100	12200	---	---	---
	BPRRV-36-5-CS	CA198	5	1100		20600	19950	19200	18500	17800	16020	14300	---	---
	BPRRV-36-7-1/2-CS	CA198	7-1/2	1250		22500	21900	21200	20750	20050	19008	17000	15200	---
42	BPRRV-42-2-CS	CA119	2	820	57"	20700	18900	17002	14700	11400	4000	---	---	---
	BPRRV-42-3-CS	CA119	3	890		23700	22100	20200	18960	16970	9950	3600	---	---
	BPRRV-42-5-CS	CA199	5	850		26900	25600	24403	23450	22250	18400	13900	---	---
	BPRRV-42-7-1/2-CS	CA199	7-1/2	960		30800	29600	28500	27400	26200	23500	20500	16500	---
	BPRRV-42-10-CS	CA199	10	1075		33300	32500	31500	30300	29500	27400	25100	22000	18000
48	BPRRV-48-5-CS	CA195	5	800	63"	33000	31000	29400	27500	25670	20700	---	---	---
	BPRRV-48-7-1/2-CS	CA195	7-1/2	900		37500	35900	34500	32800	31200	27700	23000	---	---
	BPRRV-48-10-CS	CA195	10	1000		41200	39700	38300	36900	35400	32400	29000	24400	---
60	BPRRV-60-5-CS	CA143	5	690	75"	45000	40800	36000	32150	26000	---	---	---	---
	BPRRV-60-7-1/2-CS	CA227	7-1/2	690		51000	49500	47250	43500	39375	30750	21375	16875	12000
	BPRRV-60-10-CS	CA227	10	783		54000	51900	49000	46300	43200	36000	27000	---	---
	BPRRV-60-15-CS	CA227	15	870		61000	59500	57000	55000	49000	46000	40000	32000	---

### OPTIONAL ACCESSORIES

- Weatherproof non-fused disconnect switches
- Insulated roof curbs for flat or pitched roofs

# Roof Exhausters

## MODEL BRV8 – INDUSTRIAL ROOF EXHAUSTER – BELT DRIVE

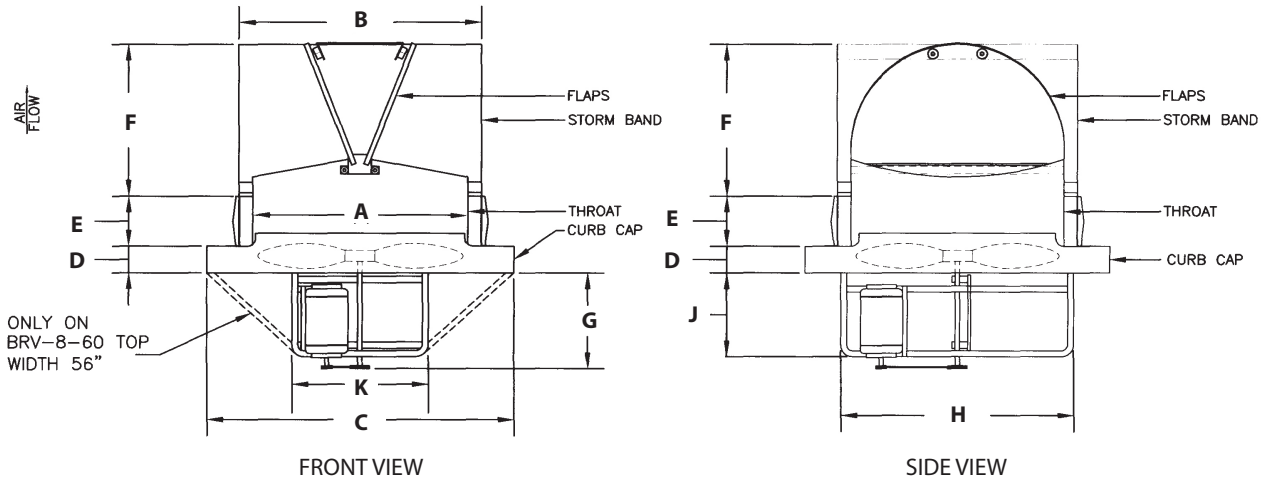


### APPLICATION

Designed for general ventilation in production or warehouse areas where efficient, quiet air flow is required.

### FEATURES AND BENEFITS

- Ruggedly constructed steel curb cap including spun venturi section for efficient air flow.
- Heavy gauge fabricated steel propellers are standard.
- Cast aluminum spark-resistant propellers available for hazardous locations.
- Butterfly damper section, mill galvanized construction, with damper blades that open when fan is energized and close weathertight when unit is off. Dampers rotate in nylon bearings on a stainless steel axle.
- Belt driven for quiet operation.
- Industrial grade cast iron pillow block ball bearings with locking collars.



### DIMENSIONS (subject to change without notice)

MODEL	A	B	C	D	E	F	G	H	J	K	HP
BRV-824	25"	30"	39" sq.	2 1/2"	3"	19"	16 3/4"	28"	10 1/2"	15 1/2"	1/3-3/4
BRV-830	31"	36"	45" sq.	2 1/2"	3"	22"	17 3/4"	34"	10 1/2"	15 1/2"	1/2-1 1/2
BRV-836	37"	42"	51" sq.	2 1/2"	3"	25"	18 3/4"	39 1/2"	12 1/2"	20 1/4"	1/2-2
BRV-842	43"	48"	57" sq.	2 1/2"	3"	27"	18 3/4"	45 1/2"	12 1/2"	20 1/4"	3/4-3
BRV-848	49"	54"	63" sq.	2 1/2"	3"	30"	21 3/4"	51 1/2"	15 1/2"	20 1/4"	3/4-5
BRV-854	55"	60"	69" sq.	2 1/2"	3"	36"	23 3/4"	57 1/2"	18"	27 1/4"	1-5
BRV-860	61"	66"	75" sq.	2 1/2"	3"	42"	23 3/4"	63 1/2"	18"	27 1/4"	1 1/2-5



## MODEL BRV8 – INDUSTRIAL ROOF EXHAUSTER – BELT DRIVE PERFORMANCE DATA

Blade Dia.	Model	Prop	HP	RPM	Free Air	CAPACITY C.F.M.			
						1/8" SP	1/4" SP	3/8" SP	1/2" SP
24"	BRV-824-1/3	S-24	1/3	780	4900	4222	2807	1576	800
	BRV-824-1/2	S-24	1/2	980	6219	5716	5661	4043	2600
	BRV-824-3/4	S-24	3/4	1140	7090	6648	6144	5518	4413
30"	BRV-830-1/2	S-30	1/2	640	8507	7170	4486	2724	1373
	BRV-830-3/4	S-30	3/4	770	10235	9192	7657	5108	3833
	BRV-830-1	X-30	1	975	10668	9959	8626	6828	5184
	BRV-830-1 1/2	X-30	1 1/2	1140	12473	11867	11112	9656	8135
36"	BRV-836-1/2	S-36	1/2	530	10500	8821	5985	3642	2084
	BRV-836-3/4	S-36	3/4	605	11985	10583	8563	5545	4017
	BRV-836-1	S-36	1	665	13174	11932	10299	7913	5729
	BRV-836-1 1/2	X-36	1 1/2	720	13660	12012	9579	7240	5000
	BRV-836-2	X-36	2	870	16554	15376	14088	11942	9691
42"	BRV-842-3/4	S-42	3/4	435	14040	11530	7633	4847	3311
	BRV-842-1	S-42	1	490	15429	13194	10438	6414	4668
	BRV-842-1 1/2	S-42	1 1/2	550	17420	15421	13117	9980	7289
	BRV-842-2	X-42	2	725	20653	19128	17503	15264	11319
	BRV-842-3	X-42	3	830	23645	22296	20984	19406	17290
48"	BRV-848-3/4	S-48	3/4	370	17339	13700	7389	4238	2244
	BRV-848-1	S-48	1	410	19188	16078	10903	6378	4037
	BRV-848-1 1/2	S-48	1 1/2	465	21731	19010	14991	10950	7081
	BRV-848-2	S-48	2	520	24274	21943	19080	15532	10125
	BRV-848-3	X-48	3	680	28150	25683	23615	20820	16930
	BRV-848-5	X-48	5	800	33160	30900	29290	27380	25000
54"	BRV-854-1	X-54	1	410	23130	20588	17500	11640	9600
	BRV-854-1 1/2	X-54	1 1/2	450	25400	22600	19300	12782	10316
	BRV-854-2	X-54	2	480	27200	24312	20660	13642	11010
	BRV-854-3	X-54	3	550	31213	28722	25830	21730	15420
	BRV-854-5	X-54	5	660	37458	35238	32843	30298	26538
60"	BRV-860-1 1/2	X-60	1 1/2	340	28068	23203	15624	11434	8000
	BRV-860-2	X-60	2	390	32200	26710	17924	13118	9380
	BRV-860-3	X-60	3	450	37183	32356	25324	18705	15013
	BRV-860-5	X-60	5	540	44600	41232	35819	29000	23237

### OPTIONAL ACCESSORIES

- Weatherproof non-fused disconnect switches
- Insulated roof curbs for flat or pitched roofs

# Roof Exhausters

## MODEL AM – INDUSTRIAL ROOF EXHAUSTER – DIRECT DRIVE

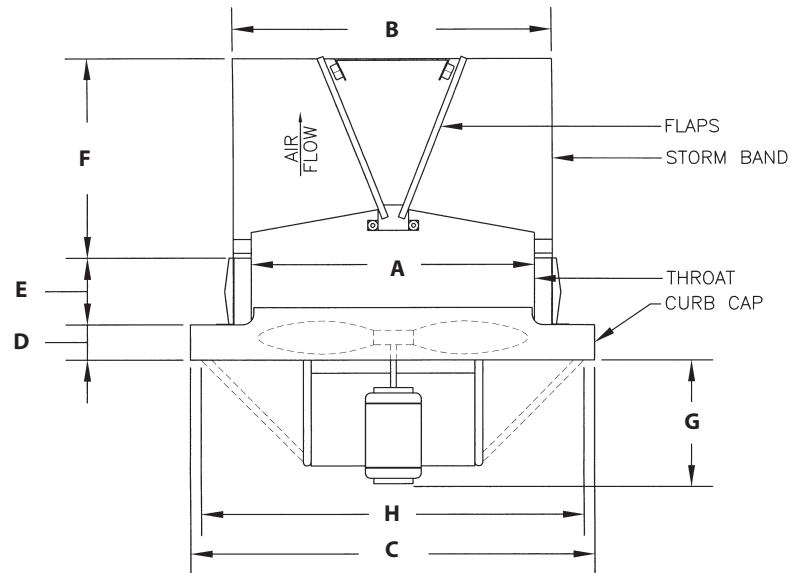


### APPLICATION

Designed for general ventilation and smoke and fume removal where lower cost and less maintenance are a priority.

### FEATURES AND BENEFITS

- Ruggedly constructed steel curb cap including spun venturi section for efficient air flow.
- Cast aluminum spark-resistant propellers are standard and suitable for use in hazardous locations when paired with explosion proof motor.
- Butterfly damper section, mill galvanized construction, with damper blades that open when fan is energized and close weathertight when unit is off. Dampers rotate in nylon bearings on a stainless steel axle.
- Available in 304 or 316 stainless steel construction.



### DIMENSIONS (subject to change without notice)

MODEL	A	B	C	D	E	F	G	H	HP
AM-18	19"	24"	33" sq.	2 1/2"	3"	16"	13"	28"	1/4-1
AM-24	25"	30"	39" sq.	2 1/2"	3"	19"	15"	34"	1/4-3
AM-30	31"	36"	45" sq.	2 1/2"	3"	22"	15"	40"	3/4-5
AM-36	37"	42"	51" sq.	2 1/2"	3"	25"	18"	46"	2-5
AM-42	43"	48"	57" sq.	2 1/2"	3"	27"	18"	52"	2-5
AM-48	49"	54"	63" sq.	2 1/2"	3"	30"	20"	58"	3-10
AM-60	61"	66"	75" sq.	2 1/2"	3"	42"	22"	70"	5-7 1/2



## MODEL AM – INDUSTRIAL ROOF EXHAUSTER – DIRECT DRIVE PERFORMANCE DATA

Blade Dia.	Model	Prop	HP	RPM	Free Air	CAPACITY C.F.M.			
						1/8" SP	1/4" SP	3/8" SP	1/2" SP
18"	AML-18-1/4	CA107	1/4	1140	2570	2263	1673	1136	854
	AM-18-1/3	CA232	1/3	1725	3375	3000	2600	2000	1400
	AM-18-1/2	CA161	1/2	1725	4150	3850	3150	2800	1700
	AM-18-1	CA107	1	1725	4600	4375	4080	3600	3000
24"	AM-24-1/4	CA130	1/4	1725	5200	4200	2820	1050	---
	AML-24-3/4	CA114	3/4	1140	6900	6450	6265	5600	3300
	AM-24-1	CA109	1	1725	7425	7000	6350	5850	5000
	AM-24-3	CA114	3	1725	10500	9800	9500	9100	8700
30"	AML-30-3/4	CA113	3/4	1140	10440	9750	8750	7640	6000
	AMLL-30-1	CA115	1	870	10640	10450	9800	9000	7900
	AML-30-1 1/2	CA127	1 1/2	1140	13350	12500	11450	10200	8000
	AML-30-2	CA115	2	1140	14000	13750	12900	11850	10450
	AM-30-3	CA113	3	1725	16000	15350	14700	13850	12900
	AM-30-5	CA127	5	1725	17750	17500	17150	16700	16200
36"	AMLL-36-2	CA163	2	870	17600	16500	15200	13620	11400
	AML-36-2	CA117	2	1140	17620	16500	15200	13620	12300
	AML-36-3	CA221	3	1140	20500	19500	18500	17100	15850
	AML-36-5	CA198	5	1140	21200	20500	19500	18484	17325
42"	AML-42-2	CA165	2	1140	17964	17277	15326	13990	12351
	AMLL-42-5	CA199	5	870	24500	23100	21900	20500	18600
	AML-42-5	CA119	5	1140	28970	27960	26840	25700	24200
48"	AML-48-3	CA137	3	1140	28600	26500	24400	22000	20000
	AMLL-48-5	CA138	5	870	33000	31500	29750	27650	25300
	AMLL-48-7 1/2	CA195	7 1/2	870	35654	33411	31857	30219	28021
	AML-48-7 1/2	CA139	7 1/2	1140	37000	35100	32800	30600	28000
	AMLL-48-10	CA140-E	10	870	46000	44000	41000	39000	36000
	AML-48-10	CA138	10	1140	41000	39200	38300	37000	35400
60"	AMLL60-5	CA169	5	870	45200	41500	37000	33000	26000
	AMLL60-7 1/2	CA228	7 1/2	870	47000	45500	43600	41000	38700

### OPTIONAL ACCESSORIES

- Weatherproof non-fused disconnect switches
- Insulated roof curbs for flat or pitched roofs

# Roof Ventilator

## MODEL 1900B – INDUSTRIAL ROOF VENTILATOR – BELT DRIVE

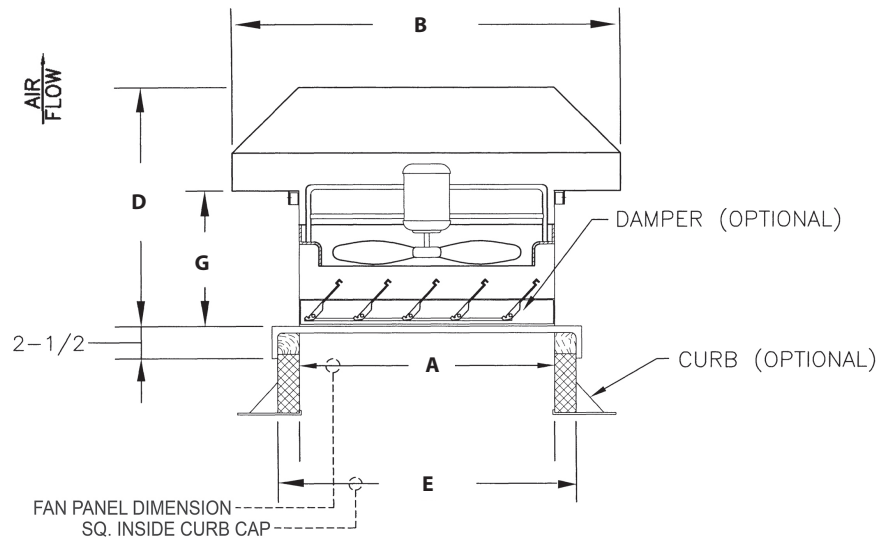


### APPLICATION

Designed for general ventilation needs. Available for intake or exhaust air flow and belt driven or direct driven construction.

### FEATURES AND BENEFITS

- Heavy gauge continuously welded curb cap provides watertight construction.
- Standard construction includes rugged fabricated steel propellers; non-sparking cast aluminum propellers available for hazardous locations.
- Standard construction is belt driven but is also available in direct drive if required.
- Can be built for supply or exhaust with special reversible propeller.
- Fabricated aluminum weather hood with removable birdscreen. Easily opened and fully supported in place for full access to fan inside.



\*Fan shown in exhaust configuration.

### DIMENSIONS (subject to change without notice)

MODEL	A	B	D	E	G	HP
1924	30"	54" x 64"	41 1/2"	39"	28"	1/4-1
1930	36"	60" x 76"	41 1/2"	45"	28"	1/3-1 1/2
1936	42"	72" x 82"	45 1/2"	51"	30"	1/3-2
1942	48"	80" x 89"	45 1/2"	57"	30"	1/2-3
1948	54"	87" x 95"	49 1/2"	63"	32"	3/4-5
1954	60"	92" x 98"	50 1/2"	69"	32"	1-5
1960	66"	90" x 107"	54 1/2"	75"	34"	1-7 1/2

## MODEL 1900B – INDUSTRIAL ROOF VENTILATOR – BELT DRIVE PERFORMANCE DATA

Blade Dia.	Model	Prop	HP	RPM	Free Air	CAPACITY C.F.M.		
						1/8" SP	1/4" SP	3/8" SP
24"	1924-B-1/4	S24	1/4	780	4222	2807	1576	800
	1924-B-1/2	S24	1/2	980	5716	5061	4043	2600
	1924-B-3/4	S24	3/4	1140	6648	6144	5518	4413
	1924-B-1	X24	1	1250	6696	6271	5600	4464
30"	1930-B-1/3	S30	1/3	595	6380	3617	1808	767
	1930-B-1/2	S30	1/2	640	7170	4486	2724	1373
	1930-B-3/4	S30	3/4	770	9192	7657	5108	3833
	1930-B-1	X30	1	975	9959	8626	6828	5184
	1930-B-1 1/2	X30	1 1/2	1140	11867	11112	9656	8135
36"	1936-B-1/3	S36	1/3	460	6992	3722	1825	---
	1936-B-1/2	S36	1/2	530	8821	5985	3642	2084
	1936-B-3/4	S36	3/4	605	10583	8563	5545	4017
	1936-B-1	S36	1	665	11932	10299	7913	5729
	1936-B-1 1/2	X36	1 1/2	720	12012	9579	7240	5000
	1936-B-2	X36	2	870	15376	14088	11942	9691
42"	1942-B-1/2	S42	1/2	390	9352	4957	3050	1642
	1942-B-3/4	S42	3/4	435	11530	7633	4847	3311
	1942-B-1	S42	1	490	13194	10438	6414	4668
	1942-B-1 1/2	S42	1 1/2	550	15421	13117	9980	7289
	1942-B-2	X42	2	725	19128	17503	15264	11319
	1942-B-3	X42	3	830	22296	20984	19406	17290
48"	1948-B-3/4	S48	3/4	370	13700	7389	4283	2244
	1948-B-1	S48	1	410	16078	10908	6378	4037
	1948-B-1 1/2	S48	1 1/2	465	19010	14991	10950	7081
	1948-B-2	S48	2	520	21943	19080	15532	10125
	1948-B-3	X48	3	680	25683	23615	20820	16930
	1948-B-5	X48	5	800	30900	29290	27380	25000
54"	1954-B-1	X54	1	410	20588	17500	11640	9600
	1954-B-1 1/2	X54	1 1/2	450	22600	19300	12782	10316
	1954-B-2	X54	2	480	24312	20660	13642	11010
	1954-B-3	X54	3	550	28722	25830	21730	15420
	1954-B-5	X54	5	660	35238	32843	30298	26538
60"	1960-B-1	X60	1	280	19161	12850	---	---
	1960-B-1 1/2	X60	1 1/2	340	23283	15624	11434	8000
	1960-B-2	X60	2	390	26710	17924	13118	9380
	1960-B-3	X60	3	450	32356	25324	18705	15013
	1960-B-5	X60	5	540	41232	35819	29000	23237
	1960-B-7 1/2	X60	7 1/2	610	47000	43000	40000	32000

### OPTIONAL ACCESSORIES

- Gravity, counterbalanced or motorized dampers
- Weatherproof non-fused disconnect switches
- Insulated roof curbs for flat or pitched roofs
- Filter box section for intake units (reduced CFM)

**DISTRIBUTED BY**

**[www.americraftmfg.com](http://www.americraftmfg.com)**

7937 School Road • Cincinnati, OH 45249 • 1.800.848.2938